



AutoRoll+™ Motorized Roller Accumulation Conveyor (AR+)



MECHANICAL CHARACTERISTICS

Bed Section:

Rollers Low In Frame: 7 1/2" Deep x 1 1/2" Flange x 12 Gauge channel frame with 1 1/2" integral guard rail. Includes full side covers.

Rollers High In Frame: 5 1/2" Deep x 1 1/2" Flange x 12 Gauge channel frame. Includes full side covers.

Rollers:

1 7/8" Diameter, 16 Gauge, carrying roller with 7/16" hex axle.

Drive Rollers:

(1) Automation 24VDC brushless motor driven roller per accumulation zone. Includes wire harness, ERSC motor control card with accumulation logic.

Sensor:

Side-mounted 24VDC polarized retro-reflective photo-eye.

Axle Isolators:

Specially designed conductive plastic insert isolates carrying roller axles from the conveyor frame to reduce noise and prevent wear.

Finish:

Conductive powder coated paint to prevent static charge build-up.

FEATURES

Automation AutoRoll+™ Motorized Roller (AR+) conveyor is available in various configurations to support numerous system applications. It is quiet, safe, requires low-to-no maintenance, and offers high speed and non-contact zero pressure accumulation.

Level conveyor, inclines, declines, curves and sweeps can all accumulate product without bumping, getting side-by-side, skewing or jamming. Intermixed products, such as totes, slave pallets and cartons can be handled simultaneously even when there are extreme differences in weights from one product to the next.

AutoRoll+™ conveyor features run-on-demand zones. It only runs when required to advance product, thereby reducing energy consumption and overall noise generation as well as extending the functional life of the conveyor.

When comparing actual power consumption of two like systems with same or similar throughputs, AutoRoll+™ consumed only 30% of what a comparable 460 Volt 3 Phase system would consume. This can represent a significant savings that is not often considered.

AutoRoll+™ has an extremely quiet OSHA approved sound level. As an added consideration, because AutoRoll+™ is run-on-demand, there is no sound generated when the zones are in accumulation mode, or when product is not present.

SPECIFICATIONS

Typical Applications:

Indexing
Zero Pressure Accumulation
Staging

Live Load Capacity:

75 lbs. per carton

Nominal Widths:

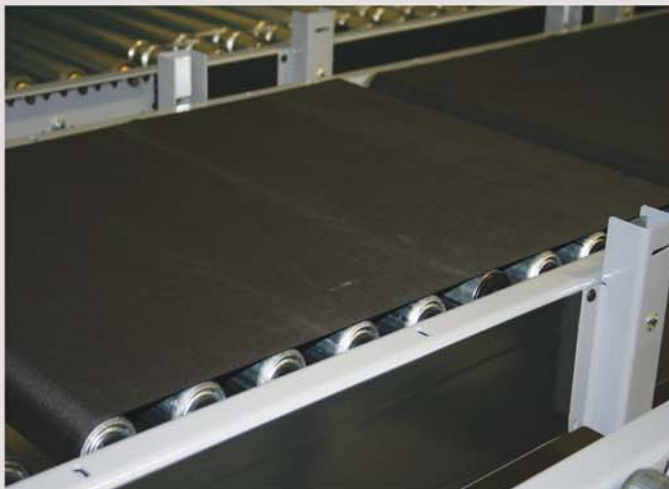
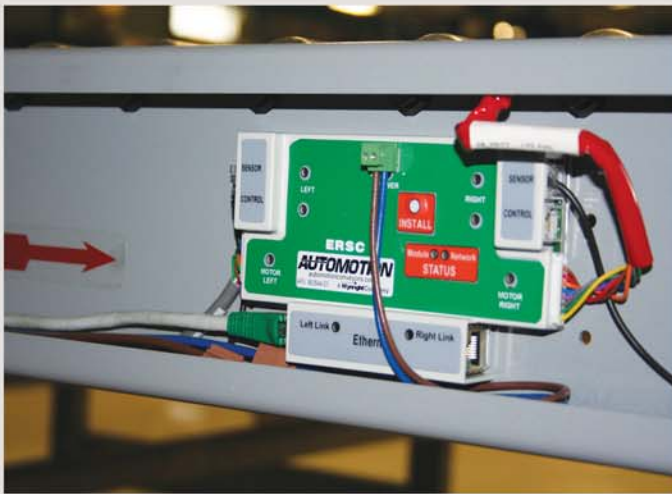
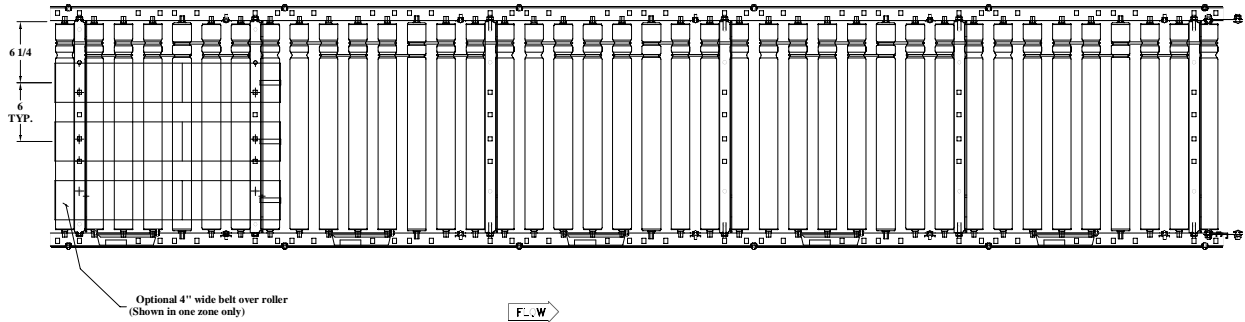
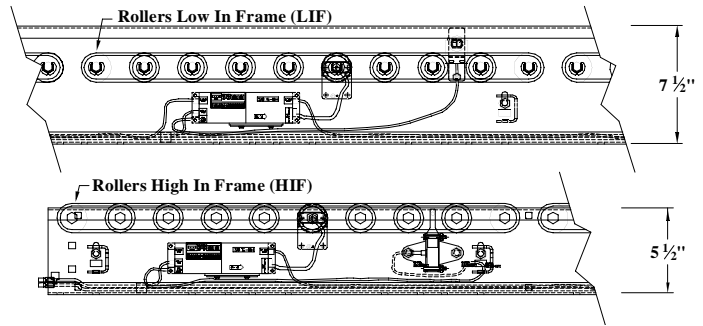
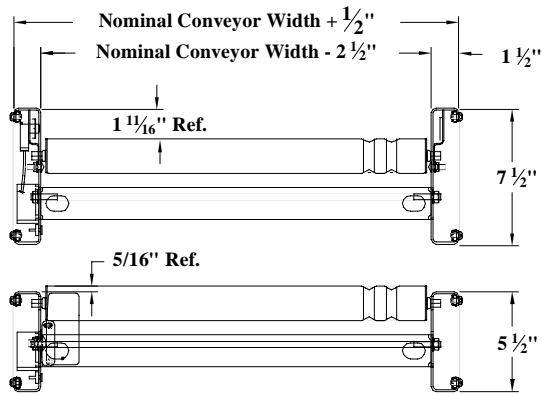
18", 24", 30" & 36"

Carrying Roller Centers:

3"

Options:

Guard Rails and Supports
Hi-Speed Rollers
Belt-Over-Roller
Punch for top mount guardrail



11000 South Laverne Avenue
Oak Lawn, Illinois 60453-5500
www.automationconveyors.com

Phone: 708-229-3700
Fax: 708-229-3799